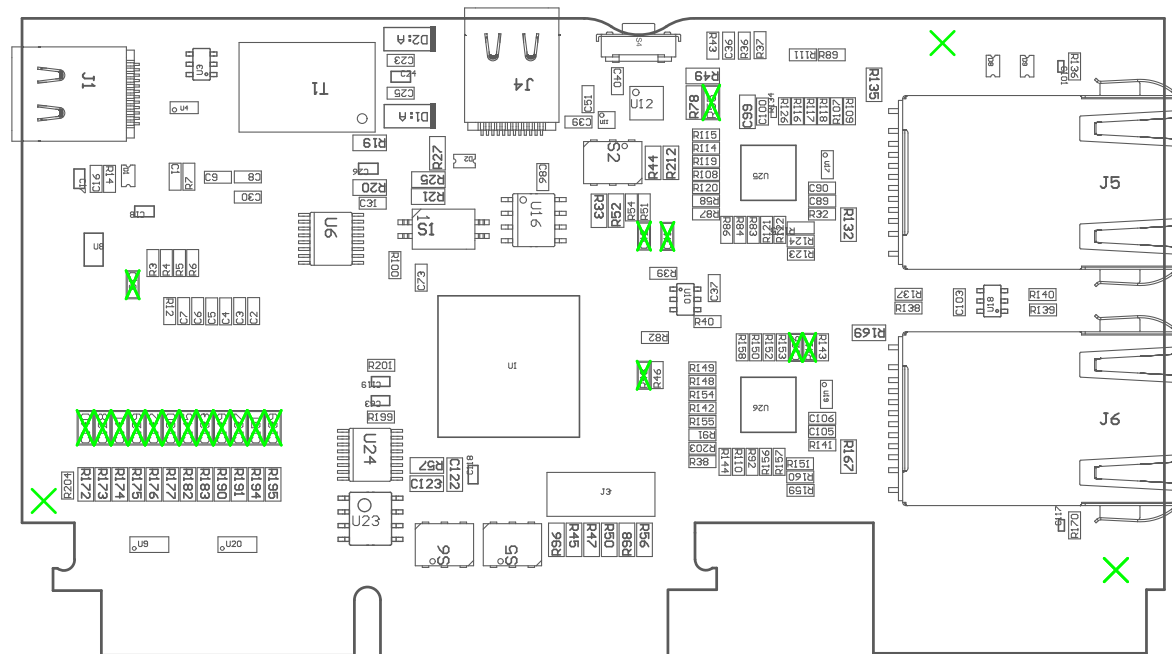
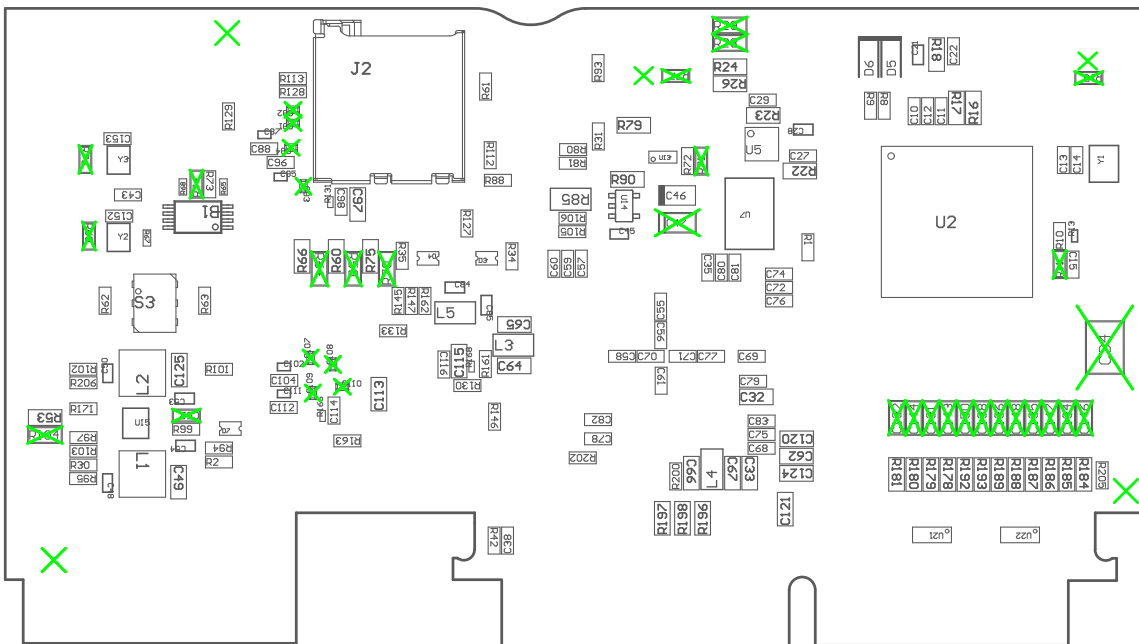


Z24 ■ These assemblies must comply with workmanship standards IPC-A-610 Class 2, unless otherwise specified.



ASSEMBLY VARIANT: 002

PCB VIEWED FROM TOP SIDE	BOARD #: MCU114	REV: B	SUN REV:
	TID #: N/A		
PLOT NAME = Top Assembly Drawing	GENERATED : 2/27/2024 3:49:36 PM		TEXAS INSTRUMENTS



COMPONENTS MARKED 'DNP' SHOULD NOT BE POPULATED.
ASSEMBLY VARIANT: 002

	BOARD #: MCU114	REV: B	SUN REV:
	TID #: N/A		
PLOT NAME = Bottom Assembly Drawing	GENERATED : 2/27/2024 3:49:36 PM	TEXAS INSTRUMENTS	